

TOP NATIVE TREES FOR LOCAL BIRDS

Southern Live Oak

Supports caterpillars songbirds feed to their nestlings and habitat for large birds

Black Cherry

Provides small summer fruits for cedar waxwings, robins, bluebirds, and catbirds.

Serviceberry

Offers early-season berries for robins, cedar waxwings, catbirds, and thrushes.

Eastern Red Cedar

Provides winter berries and dense evergreen cover for cedar waxwings, bluebirds, and robins.

American & Yaupon Holly

Holds red berries into winter, feeding birds when other food is scarce.

Black Gum / Tupelo

Provides dark fall fruits that help feed migrating birds before winter.

Red Mulberry

Produces soft summer fruit that attracts robins, cardinals, and woodpeckers.

American Persimmon

Offers soft fall fruit eaten by bluebirds, mockingbirds, and robins.

Longleaf Pine

Provides seeds, insects, and nesting habitat for pine warblers, brown-headed nuthatches, and woodpeckers.

Bald Cypress

Provides nesting and roosting habitat for wetland birds like herons and egrets.

ABOUT US

The Alliance for Cape Fear Trees **preserves, protects, and plants trees** to enhance the quality of life and health in the Lower Cape Fear region. A champion for urban forests, the Alliance works to combat tree canopy loss caused by severe storms, rapid development, and climate change.

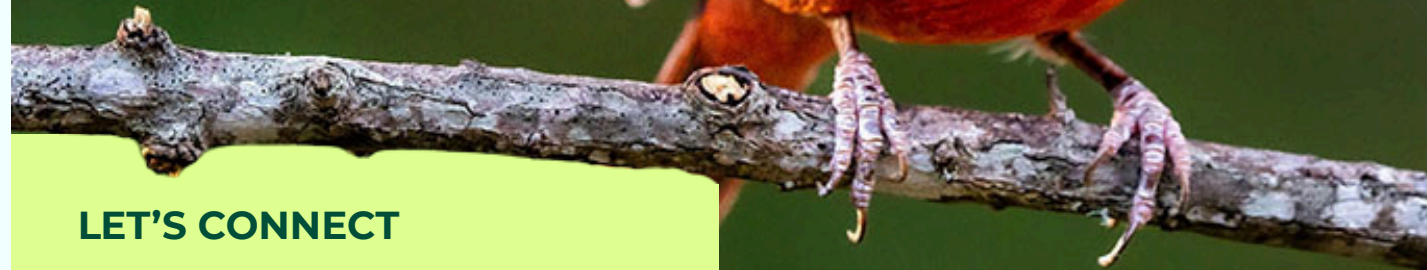
OUR IMPACT

SINCE OUR FOUNDING IN 2015...

- 3,000+ trees planted
- 21,000+ trees distributed to homeowners and communities
- Long-term care provided by our Tree Stewards volunteer program
- Focused efforts in underserved areas to promote tree equity
- Advocate for tree canopy preservation through initiatives like *Code & Canopy*

Why **planting native trees** is one of the best ways to **support local birds**

HOPE
IS
THE
THING
WITH
FEATHERS



LET'S CONNECT

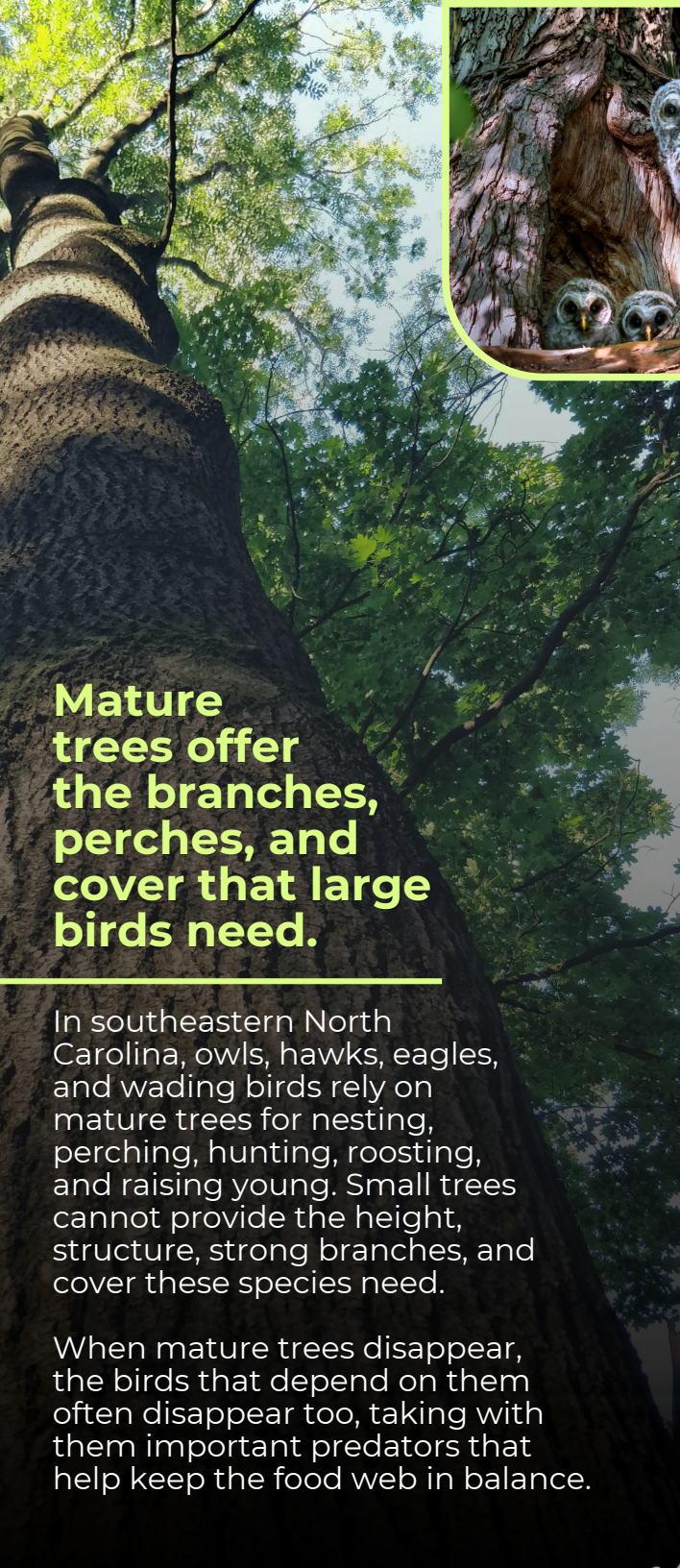
📍 7 Beauregard Drive, Suite 2
Wilmington, NC 28412

📷 @capefeartrees

👉 acftrees.org




alliance for
CAPE FEAR TREES



Mature trees offer the branches, perches, and cover that large birds need.

In southeastern North Carolina, owls, hawks, eagles, and wading birds rely on mature trees for nesting, perching, hunting, roosting, and raising young. Small trees cannot provide the height, structure, strong branches, and cover these species need.

When mature trees disappear, the birds that depend on them often disappear too, taking with them important predators that help keep the food web in balance.



Did you know?

Barred owls don't build nests from scratch. They nest in natural cavities 20–40 feet high in large trees, or they reuse old platform nests built by hawks, crows, ravens, or squirrels. Protecting older native trees helps protect the spaces these owls need to raise their young.

PLANT NATIVE TREES = SUPPORT LOCAL BIRDS

- **Plant native trees with year-round benefits:** blooms, berries, seeds, shelter, and nesting habitat.
- **Leave the leaves** beneath trees to protect insects, pupae, and overwintering butterflies.
- **Plant a diversity of native species** to support a more resilient food web.



Native trees are the foundation of the nesting-season food web. Songbirds rely on insects to feed their young, **a single clutch of Carolina Chickadees can require thousands of caterpillars before the nestlings fledge.** Planting and preserving native trees helps move energy up the food web, from leaves, to bugs, to nestlings.



Native berries keep birds fed year round.



Bird feeders can offer a snack, but they are no substitute for native berries. Native berries provide natural sugars, fat for fuel migration, and moisture when water is limited. Beyond food, native trees support insects, create shelter and nesting sites, and offer cover from predators. A single native tree can play many roles in a bird's life, helping them feed, rest, hide, and raise their young.

NATIVE BERRIES FOR EVERY SEASON!



Serviceberry Tree

SPRING



Mulberry Tree

SUMMER



Flowering Dogwood

FALL



American Holly

WINTER